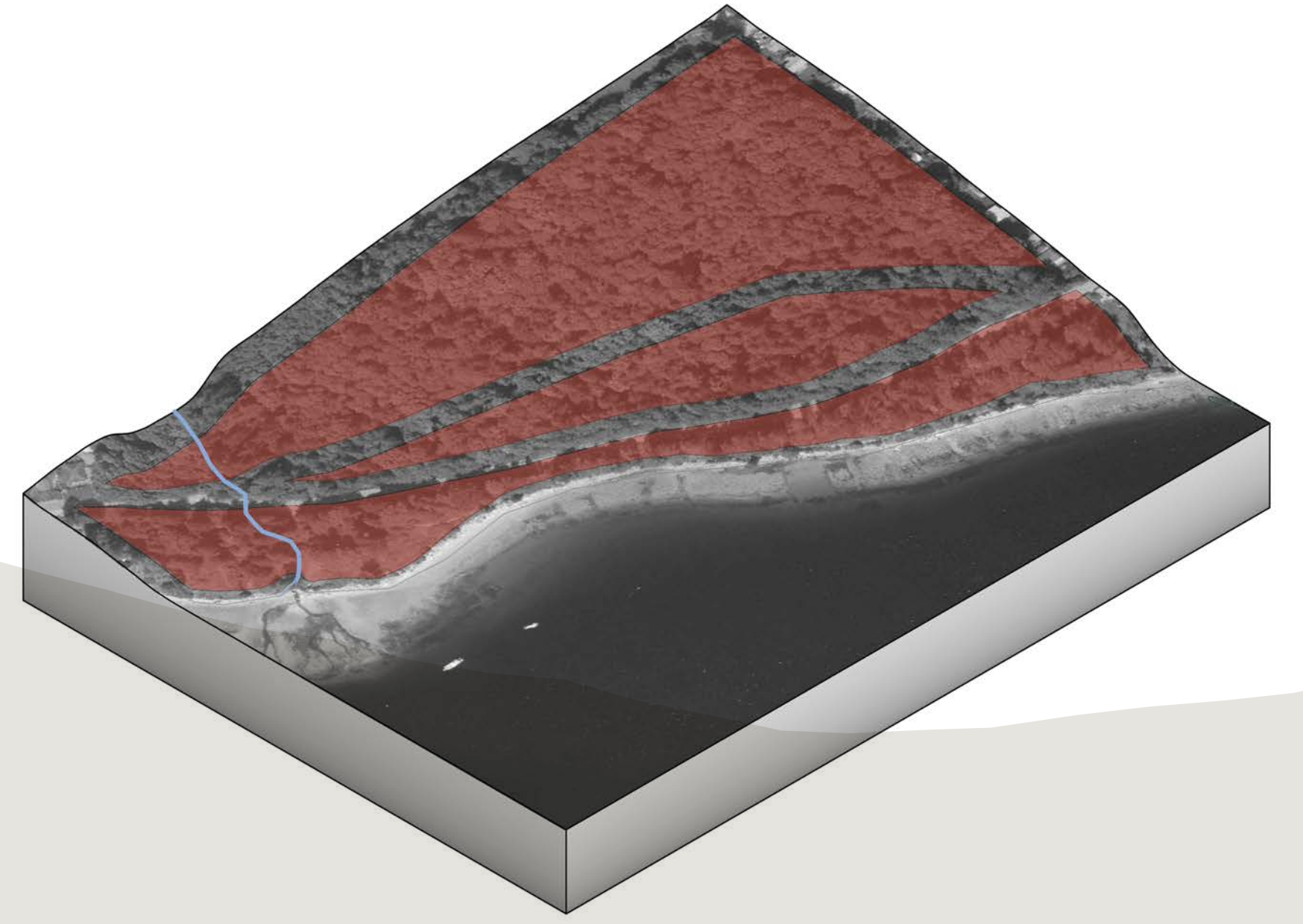


Ch'kw'elhp

Ch'kw'elhp is **one of the main Skwxwú7mesh origin villages**, and the first Village built after the last Ice Age and following the Great Flood. There are many Legends that originate from this village such as that of **Tsekánchten and Sxeláten**, and of the **“Young Trainee and the Black Fish”** that teach us about our People's relationships with the Spirit World.



How can a Coast Salish Village be rebuilt at Ch'kw'elhp?

Ch'kw'elhp



Project Process



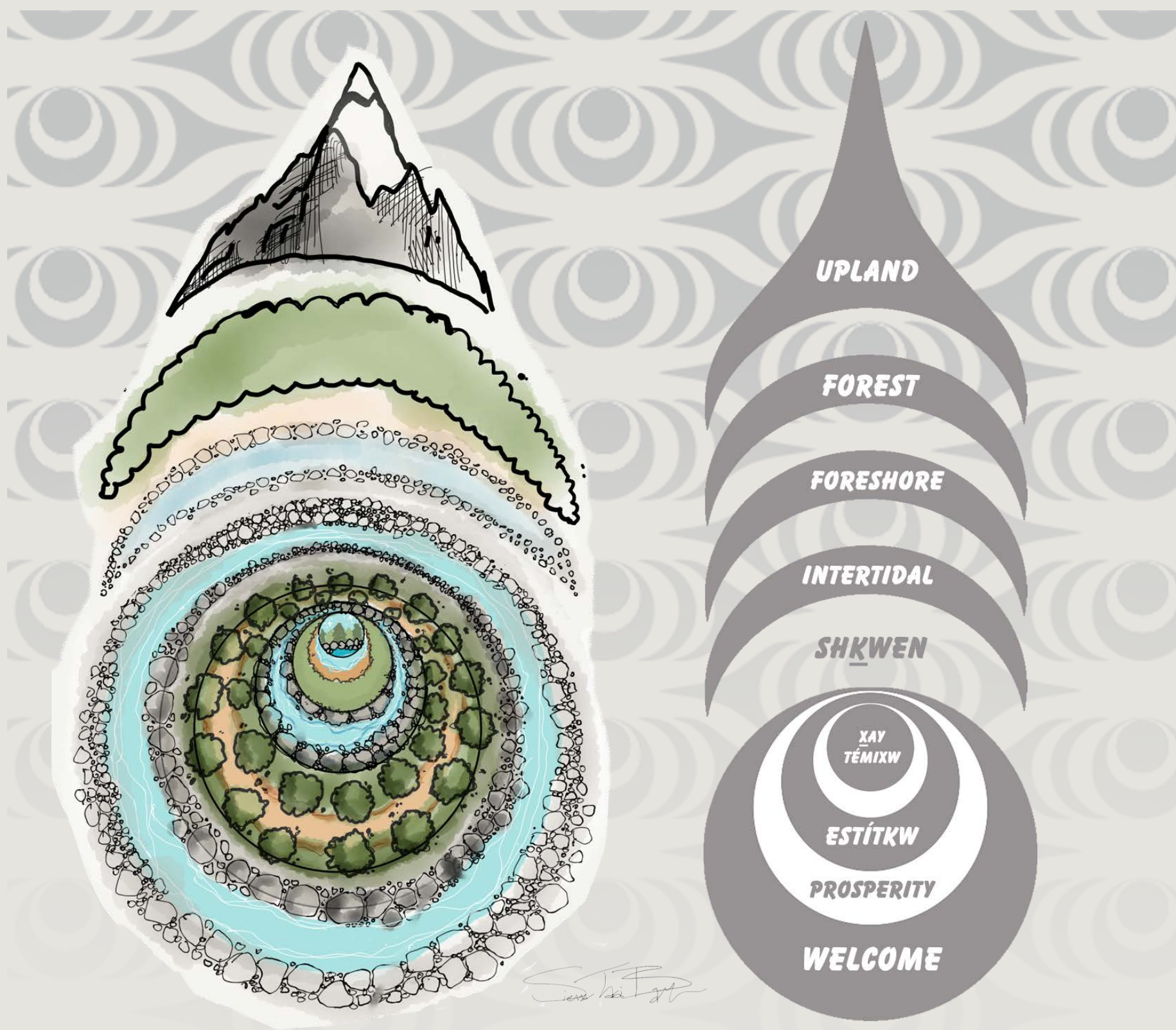
*lhulhukw'ay
(Arbutus)*



*skw'ekwchsáy
(Huckleberry bush)*



View from the shore



Land Use Categories

Lám
Housing

Áytxwmínen
Economic Development

Úxwumíxw
Community

Xay
Spiritual

Temíxw Stakw
Environmental Stewardship

Design Approach

Chéń chenstway
Uplift and uphold each other

K'ayáchten
Places of welcome

Estitkw
Safe place, closed community practice

Téywilhn xay temíxw stakw
Protect sacred land and water

Cultivate places of kinship

Principles & Strategies

Honour the origin stories and legends of place

Honour the story of the First Ancestors

Respect and honour the ancestors

Respect the resting places of the ancestors

Enhance and acknowledge Skwxwú7mesh presence

Create a welcoming to the territory upon arrival from the land and water
Place cultural spaces at connections to adjacent sites

Prioritize cultural land uses adjacent to the water

Reintroduce and honour traditional canoe and boat access on the North side of the site

Connect member housing, support services, and cultural spaces

Locate key points of entry toward the foreshore

Utilize Skwxwú7mesh models of environmental stewardship and stormwater management

Enable the remediation of Gibsons Creek

Prioritize space for services and programs that support Nation members

Maintain direct adjacencies between member housing areas and community support areas

Work with the topography to maximize views, and enhance pedestrian and vehicular circulation

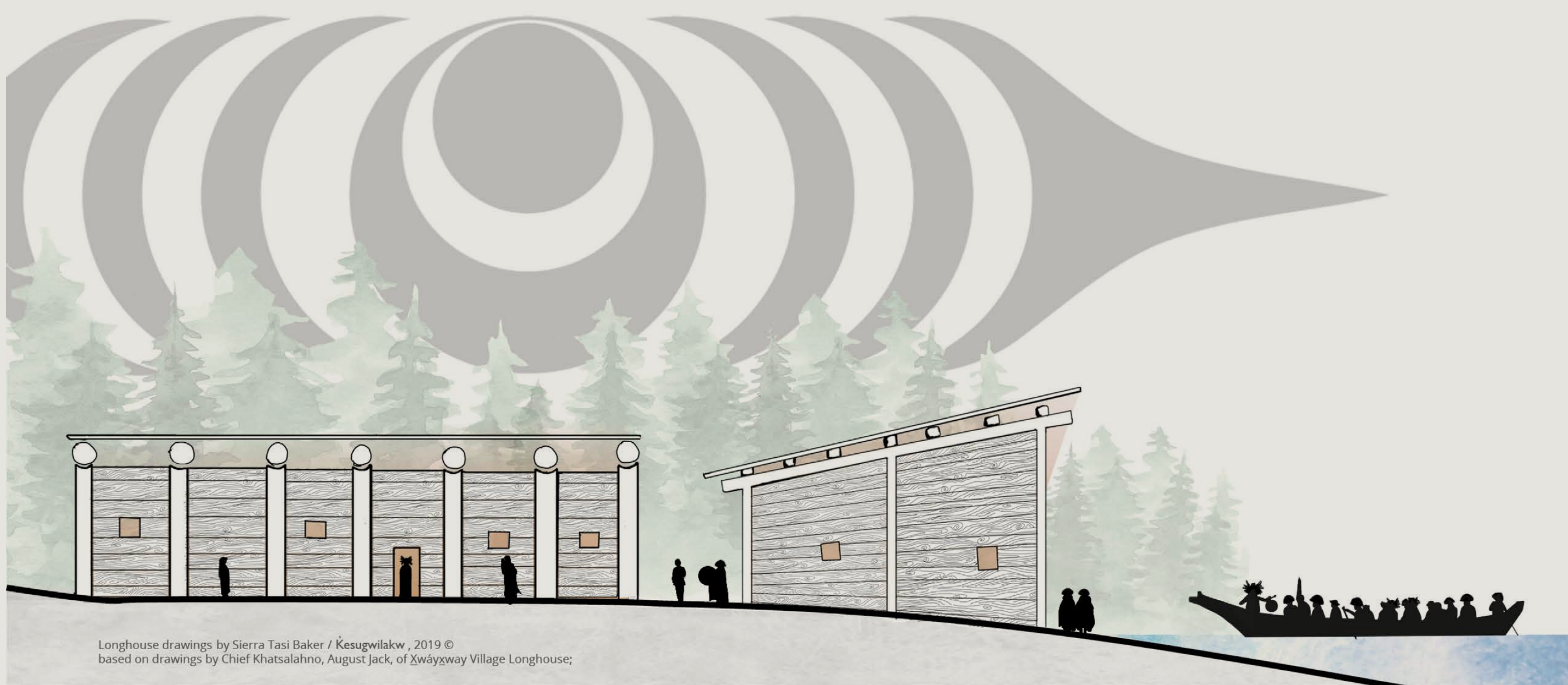
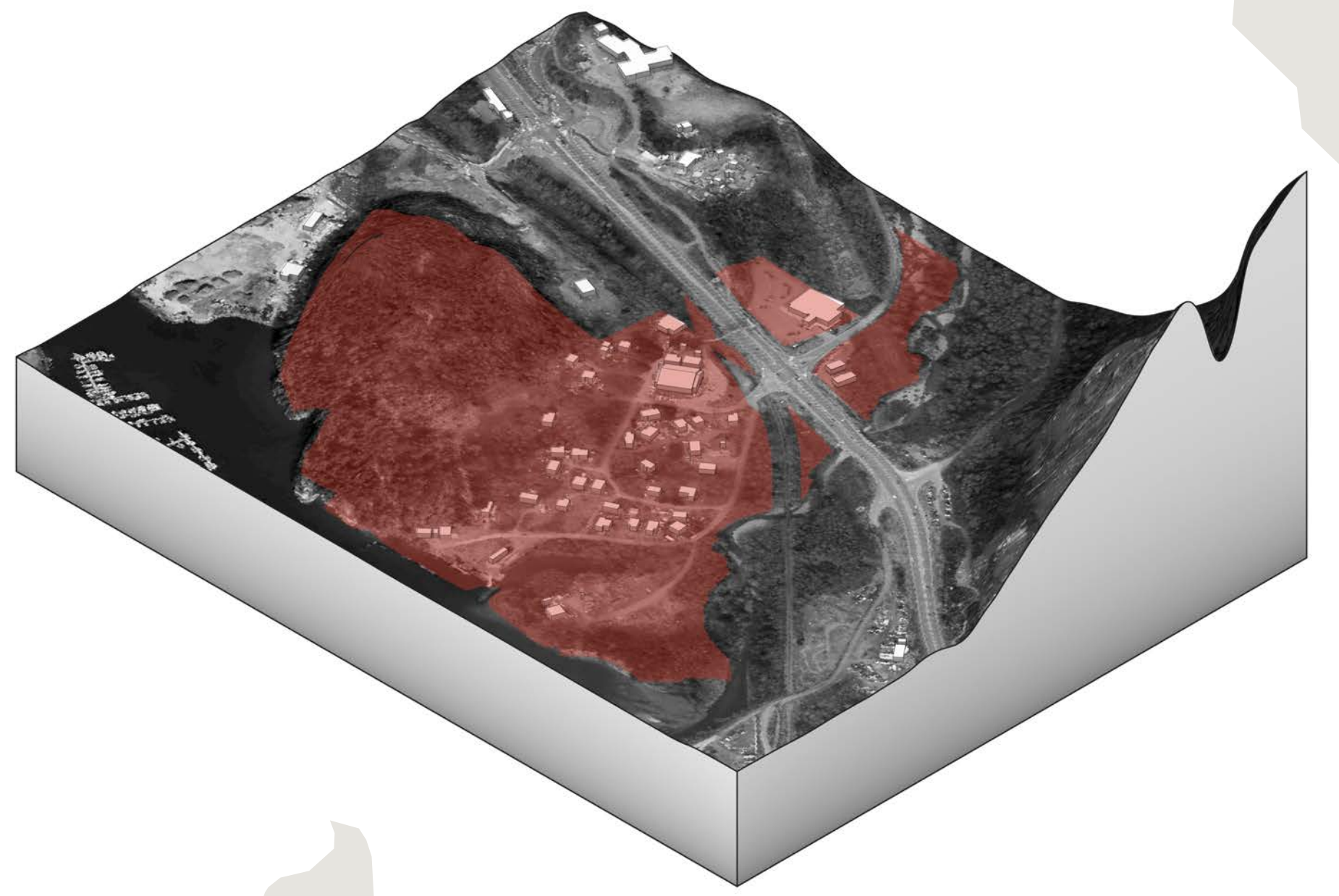
Orient homes toward the water
Create walking paths that emphasize the natural topography



Stá7mes

“There are many stories about Xaays transforming living beings. One of the most well known is about **Siyaám Smánit... The rock was once a tl'áktaxanaáwtxw (long house)**. A t'le7énk (big-time potlatch) took place, and all the Animal People were invited. The Xaays immortalized the event by transforming the guests and longhouse into a mountain. The Spirits are still within the rockface, revealing themselves at different times.”

- *Tiná7 Cht Ti Temíxw, 2023*



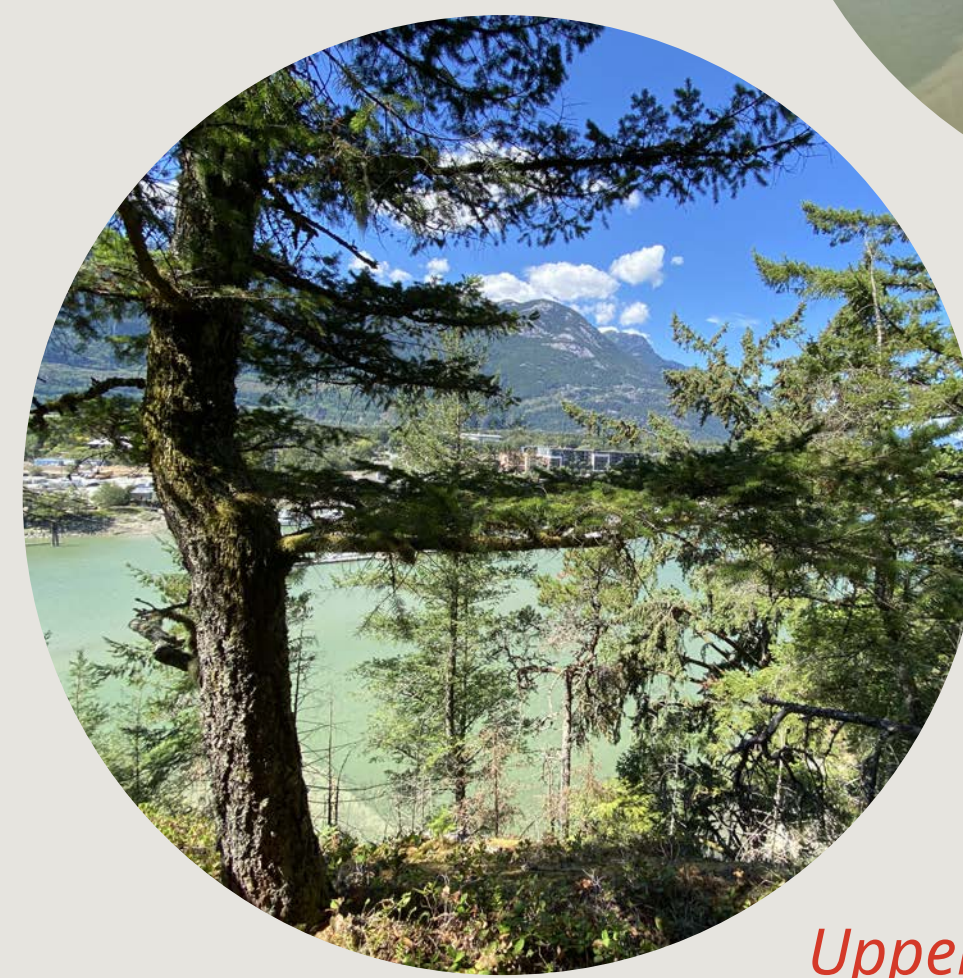
Stá7mes

Project Process

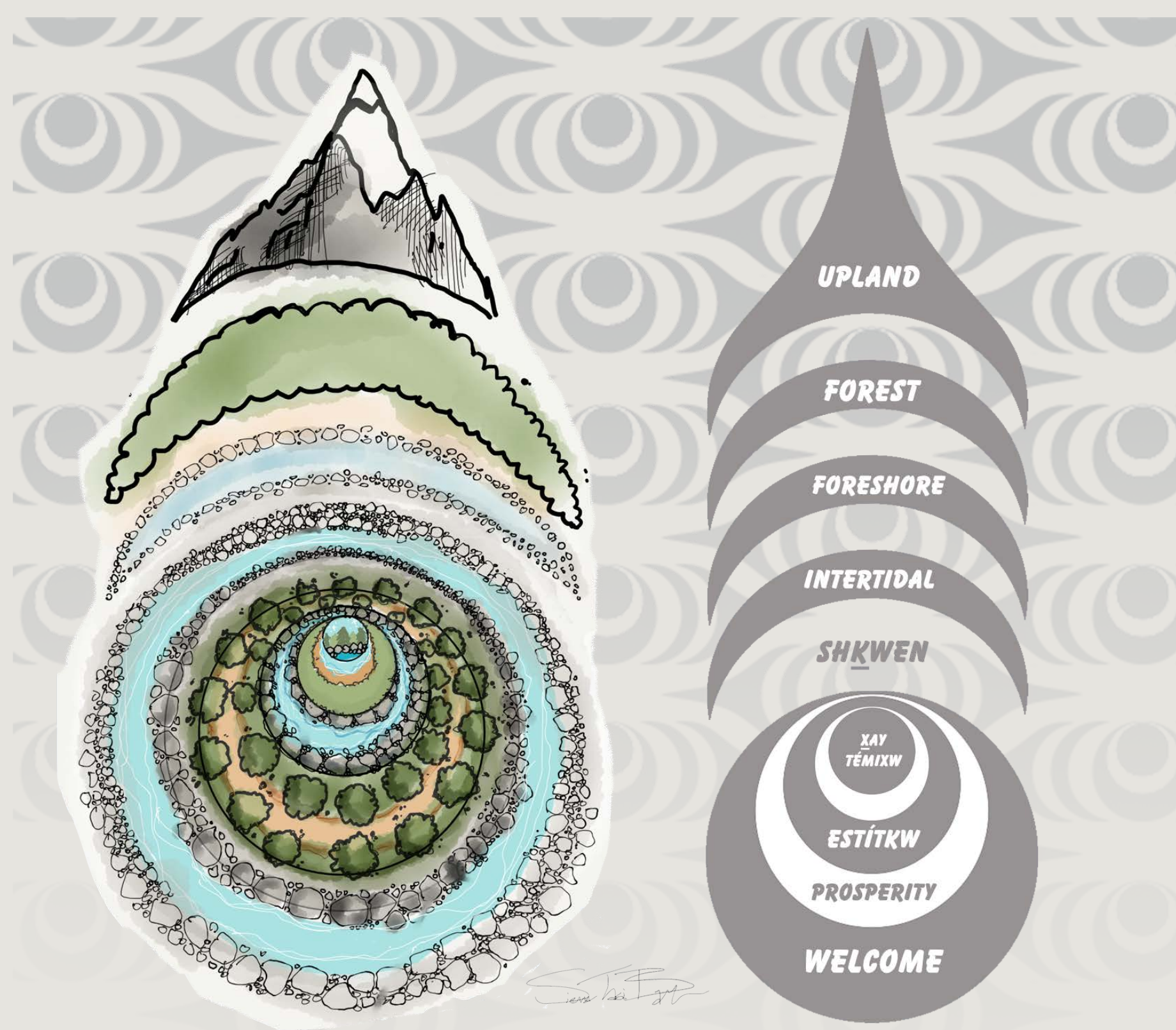
The Legend of “**The Highly Respected Daughter of a Big Chief and a Strange Dog**” teaches us about the integral family and community roles that make a Village. Working with these Skwxwú7mesh values and understandings we can apply these values to the site and work **to revitalize and support these community roles.**



View up the Mamquam Channel



View from Upper Stá7mes



Land Use Categories

La'm
Housing

Áytxwmínen
Economic Development

Úxwumixw
Community

Xay
Spiritual

Temíxw Stakw
Environmental Stewardship

Design Approach

Ché' chenstway
Uplift and uphold each other

K'ayáchten
Places of welcome

Estitkw
Safe place, closed community practice

Téywilhn xay temíxw stakw
Protect sacred land and water

Cultivate places of kinship

Principles & Strategies

Honour the origin stories and legends of place

Honour the origin stories of Stá7mes

Respect and honour the ancestors

Create a buffer area around the existing cemetery to emphasize respectful use of the land

Enhance and acknowledge Skwxwú7mesh presence

Expand housing options to increase number of members living at St'a7mes
Increase the visual presence of Skwxwú7mesh language around the site

Prioritize cultural land uses adjacent to the water

Highlight opportunities along the river for cultural practices
Establish gradient from public to private, to enable the safe pursuit of spiritual practices.

Connect member housing, support services, and cultural spaces

Maintain adjacencies and create gathering places between housing and cultural spaces
Create a new administrative area that interweaves with the community

Utilize Skwxwú7mesh models of environmental stewardship and stormwater management

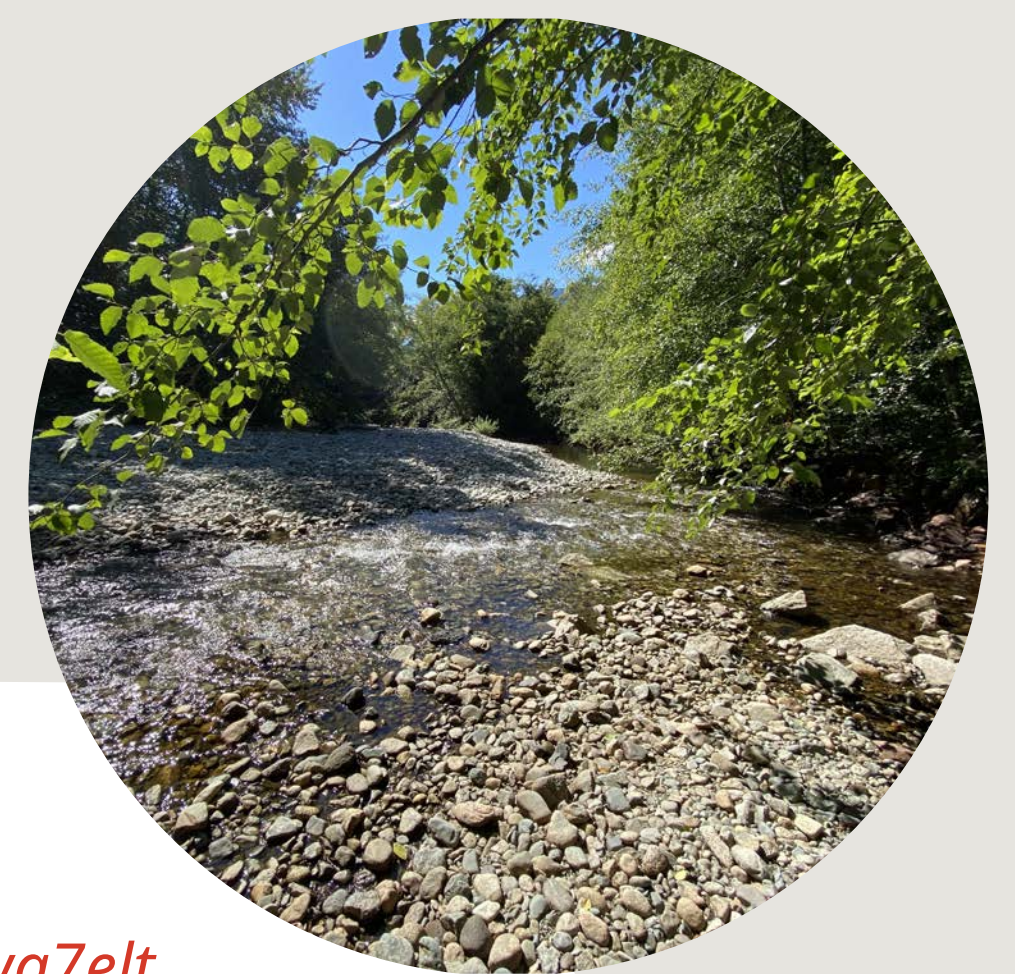
Include outdoor teaching spaces that allow environmental learnings to be passed on

Prioritize space for services and programs that support Nation members

Maintain direct adjacencies between member housing areas and community support areas

Work with the topography to maximize views, and enhance pedestrian and vehicular circulation

Develop connections to surrounding communities that enhance member access and use of the site



Sawa7elt (Stawamus River)

